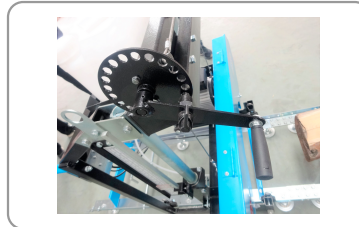


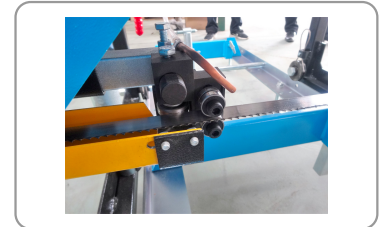
## LOG BANDSAW 400 MM

### LOG BANDSAW

- Caution : for outdoor use only.
- Compact mobile sawmill designed for carpenters and private individuals.
- Suitable for making boards, planks and beams.
- Induction motor, tough and silent.
- Machine supplied with a 1,48 m extension track for a total cutting length of 2,35m . Additional extensions available as option for different cutting lengths.
- Adjustable clamping device to hold the log securely.
- Manual advance cutting carriage equipped with anti-tilting bars.
- Manual adjustment of the cutting height by crank with scale.
- Cast iron flywheels with a cleaning brush for each of them.
- Cooling and lubrication system to keep the blade clean, without resin.
- Blade tension adjustment by an ergonomic handle.
- Safety switch on the blade guard.
- Power 2200 W - S1 and voltage 230 V.



Crank handle for cutting height adjustment



Guide et protecteur de la lame réglable



Adjustment handle for blade tension



Système de maintien de grume

SOLID WOOD

WOOD-DERIVED  
PANELS

METAL

TILE

CONCRETE  
MASONRY


STONE TILE

MULTI  
MATERIALS

PLASTER & SOFT  
MATERIALS

ASPHALT

ACCESSORIES

RÉF	SAG400
Conditionnement	1
Colisage	1560 x 520 x 750 mm
Garantie	24
Poids net	153 kg
Poids brut	188 kg
Encombrement machine montee	1360 x 3020 x 1270 mm
Reference pour pieces detachees	300800 (+ N°/ vue éclatée)
Puissance moteur (230 V - 50 Hz)	2200 W - S1
Vitesse de rotation	2800 tr/min
Hauteur de coupe minimale/maximale	50 mm / 400 mm
Dimensions de la lame	2750 x 19-22 x 0,9 mm
Diamètre des volants	Ø 350 mm
Vitesse de coupe	14 m/s
Largeur de coupe	380 mm
Profondeur de coupe	150 mm
Diamètre de tronc maximal	Ø 400 mm
Longueur de tronc minimale/maximale	550 mm / 2350 mm
Chargement de la grume	Manuel
Avance du chariot de coupe	Manuelle
Classe de protection électrique	I
Indice de protection	IP54
	3661589117373

SOLID WOOD

WOOD-DERIVED  
PANELS

METAL

TILE

CONCRETE  
MASONRY

STONE TILE

MULTI  
MATERIALS

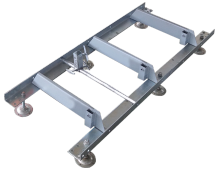
PLASTER & AMP;  
SOFT  
MATERIALS

ASPHALT

ACCESSORIES

## ACCESSOIRES

**300801**



**1480 mm track extension**

**300802**



**Tourne bille pour SAG**

SOLID WOOD

WOOD-DERIVED  
PANELS

METAL

TILE

CONCRETE  
MASONRY

STONE TILE

MULTI  
MATERIALS

PLASTER & SOFT  
MATERIALS

ASPHALT

ACCESSORIES