

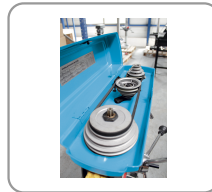
BENCH DRILL PRESS 20 MM

BENCH & FLOOR DRILL PRESS

- Table, base and drilling head in cast iron.
- Base drilled to be fixed on a workbench.
- Spindle mounted on ball bearings.
- Wet table rotating at 360° and tilting up to 45°.
- Rack & pinion table raising and lowering system.
- Adjustable depth stop for accurate and repetitive drilling operations.
- Capstan arms fitted with Soft Grip handles.
- 100 mm (4") vice.



Emergency stop push-button



Poulies en acier



Adjustable chuck guard

SOLID WOOD

WOOD-DERIVED PANELS

METAL

TILE

CONCRETE MASONRY

STONE TILE

MULTI MATERIALS

PLASTER & SOFT MATERIALS

ASPHALT

ACCESSORIES

RÉF	PRE020
Conditionnement	1
Colisage	800 x 500 x 300 mm
Garantie	24
Poids net	55 kg
Poids brut	58 kg
Encombrement machine montee	690 x 350 x 1060 mm
Reference pour pieces detachees	830300 (+ N°/ vue éclatée)
Puissance moteur (230 V - 50 Hz)	600 W - S1
Capacité de perçage maximale	20 mm
Broche d'entrainement	Cône Morse CM2
Diamètre de colonne	Ø 73 mm
Course de la broche	80 mm
Capacité de serrage du mandrin	De 1 à 16 mm
Nombre de vitesses	12
Vitesse de rotation	De 180 à 2740 tr/min
Col de cygne	190 mm
Distance broche - base / broche - table	600 / 470 mm
Diamètre de broche	Ø 47 mm
Dimensions de la table de travail	305 x 305 mm
Dimensions de la base	485 x 290 mm
	3661589071651

SOLID WOOD

WOOD-DERIVED
PANELS

METAL

TILE

CONCRETE
MASONRY

STONE TILE

MULTI
MATERIALS

PLASTER &
SOFT
MATERIALS

ASPHALT

ACCESSORIES

ACCESSOIRES

ABR701



Arbor CM2 / B18

ABR702



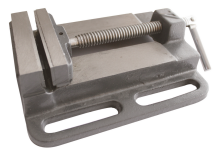
Keyless chuck B18
1-16 mm

ABR704



Drift key

ABR705



Vice with 100 mm
jaws