

RADIAL DRILL PRESS 16 MM

BENCH & FLOOR DRILL PRESS

- Table, base and drilling head in cast iron, and motor body in aluminum.
- Spindle mounted on ball bearings.
- Rack & pinion table raising and lowering system.
- Rack & pinion drilling head travelling system till 420 mm.
- Wet table rotating at 360° and tilting up to 45°.
- Strong base with T-groove and drilled to be fixed on the floor.
- Adjustable depth stop for accurate and repetitive drilling operations.
- Keyless chuck B16.
- Butée de profondeur réglable.



Tilting radial head



Poulies en aluminium



Adjustable chuck guard

SOLID WOOD

WOOD-DERIVED PANELS

METAL

TILE

CONCRETE MASONRY


STONE TILE

MULTI MATERIALS

PLASTER & SOFT MATERIALS

ASPHALT

ACCESSORIES

RÉF	PRC016
Conditionnement	1
Colisage	1420 x 500 x 260 mm
Garantie	24
Poids net	61 kg
Poids brut	64 kg
Encombrement machine montee	850 x 310 x 1620 mm
Reference pour pieces detachees	016 (+ N°/ vue éclatée)
Puissance moteur (230 V - 50 Hz)	550 W - S1
Capacité de perçage maximale	16 mm
Broche d'entrainement	Cône Morse CM2
Diamètre de colonne	Ø 70 mm
Course de la broche	80 mm
Capacité de serrage du mandrin	De 1 à 16 mm
Nombre de vitesses	5
Vitesse de rotation	De 500 à 2450 tr/min
Col de cygne	420 mm
Inclinaison de la tête	90° gauche / 45° droite
Distance broche - base / broche - table	1280 / 770 mm
Diamètre de broche	Ø 40 mm
Dimensions de la table de travail	Ø 310 mm
Dimensions de la base	420 x 250 mm
	3661589046567

SOLID WOOD

WOOD-DERIVED
PANELS

METAL

TILE

CONCRETE
MASONRY

STONE TILE

MULTI
MATERIALS

PLASTER &
SOFT
MATERIALS

ASPHALT

ACCESSORIES

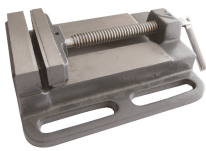
ACCESSOIRES

ABR704



Drift key

ABR705



Vice with 100 mm jaws

ABR710



Arbor CM2 / B16

SOLID WOOD

WOOD-DERIVED
PANELS

METAL

TILE

CONCRETE
MASONRY

STONE TILE

MULTI
MATERIALS

PLASTER & SOFT
MATERIALS

ASPHALT

ACCESSORIES