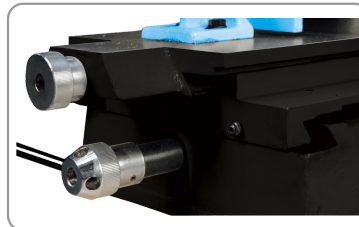


BENCH CHISEL MORTISER 550 W

CHISEL MORTISER

- Base, column, sliding head and carriages in cast iron.
- Gas spring allowing to control lowering and raising of the head.
- Mortising head mounted on dovetail sliding guide.
- Adjustable lateral stroke stops.
- Adjustable depth stop.
- Horizontal clamp adjustable with crank.
- Fixing holes on the base allowing the machine to be fixed on a stand or a workbench.



Lateral and longitudinal strokes on dovetail slides



Système de mandrin pour fixation de la mèche

SOLID WOOD

WOOD-DERIVED
PANELS

METAL

TILE

CONCRETE
MASONRY


STONE TILE

MULTI
MATERIALS

PLASTER &
SOFT
MATERIALS

ASPHALT

ACCESSORIES

RÉF	MOR375
Conditionnement	1
Colisage	670 x 450 x 340 mm
Garantie	24
Poids net	42 kg
Poids brut	46 kg
Encombrement machine montee	350 x 350 x 800 mm
Reference pour pieces detachees	170300 (+ N°/ vue éclatée)
Puissance moteur (230 V - 50 Hz)	550 W - S1
Vitesse de rotation	2800 tr/min
Capacité de serrage du mandrin B16	De 1,5 à 13 mm
Diamètre de queue de bédane	Ø 15,9 mm
Outil adaptable	Bédane de 6 à 12 mm
Dimensions de la table Mortaiseuse/Perceuse	180 x 157 mm
Dimensions du guide	180 x 50 mm
Dimensions de la base	320 x 270 mm
De l'axe de la bédane au guide (max)	70 mm
Course de la tête	120 mm
Course chariotage	170 x 40 mm
Profondeur de la mortaise (maximun avec bédane de 12 mm)	70 mm
	3700501706216

SOLID WOOD

WOOD-DERIVED
PANELS

METAL

TILE

CONCRETE
MASONRY

STONE TILE

MULTI
MATERIALS

PLASTER &
SOFT
MATERIALS

ASPHALT

ACCESSORIES

ACCESSOIRES

170001



**Ø 13 mm drill chuck
adapter**

SOLID WOOD

WOOD-DERIVED
PANELS

METAL

TILE

CONCRETE
MASONRY

STONE TILE

MULTI
MATERIALS

PLASTER & AMP;
SOFT
MATERIALS

ASPHALT

ACCESSORIES